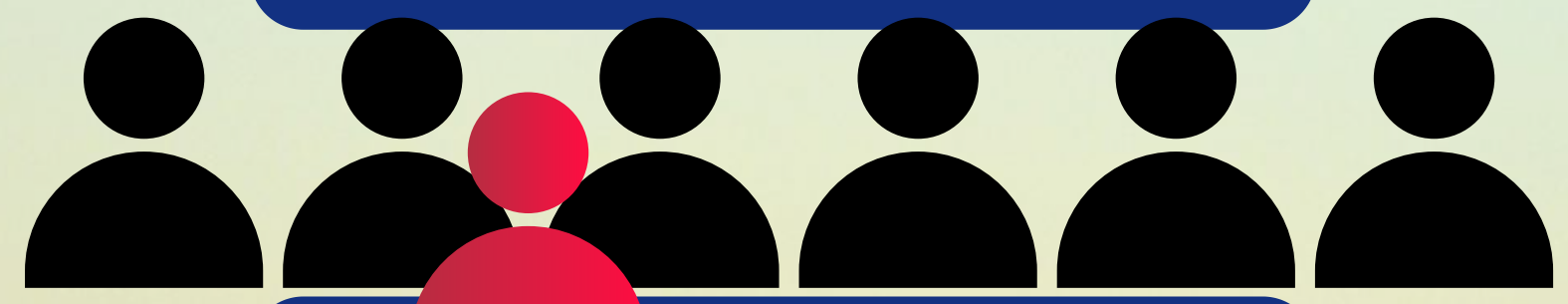
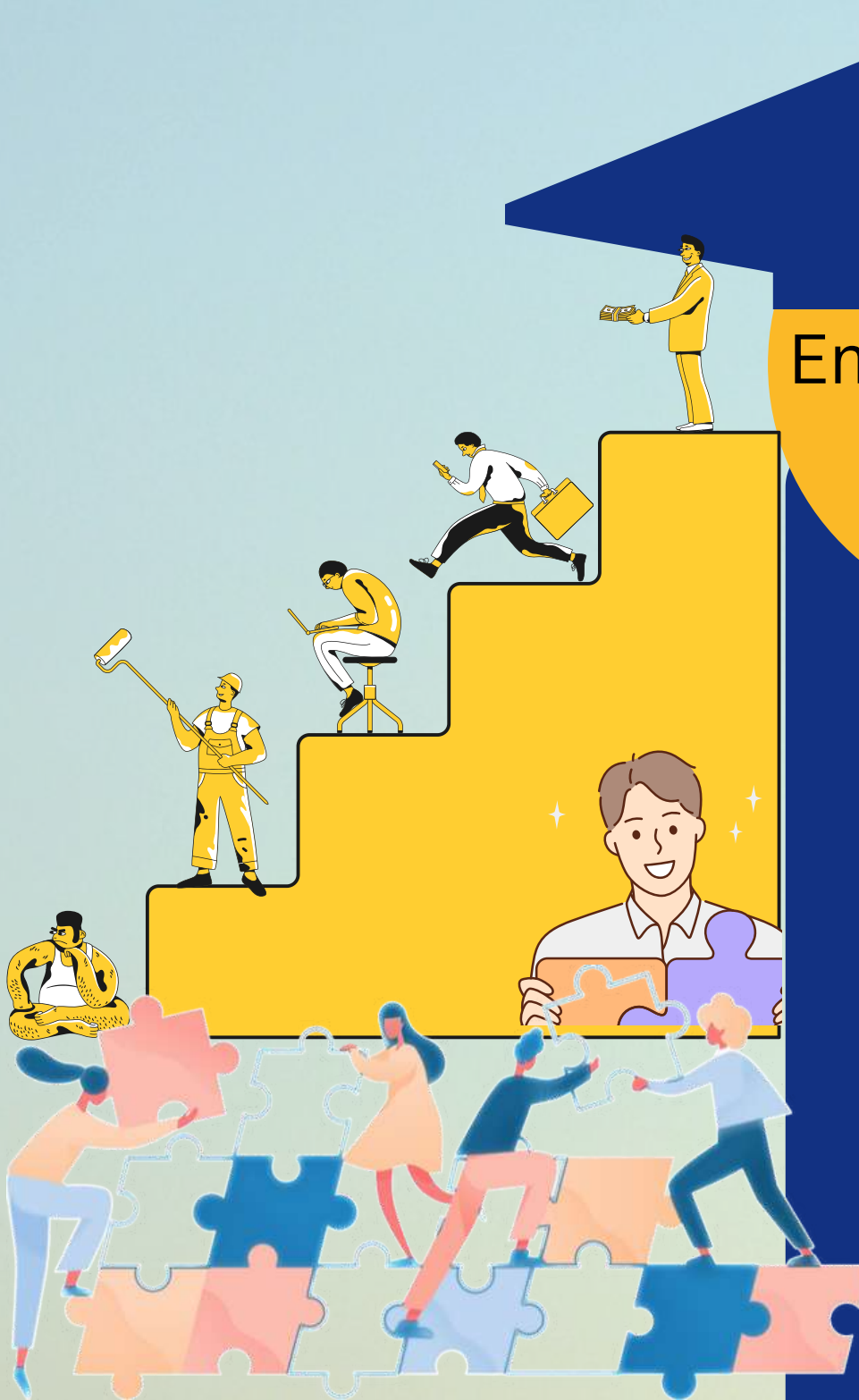


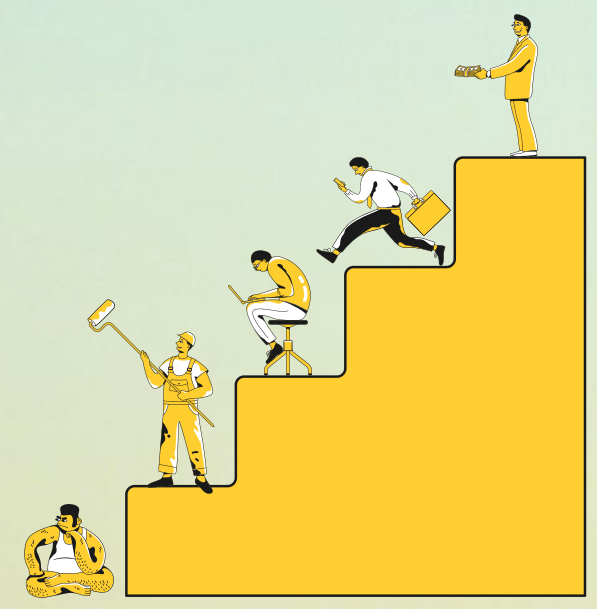
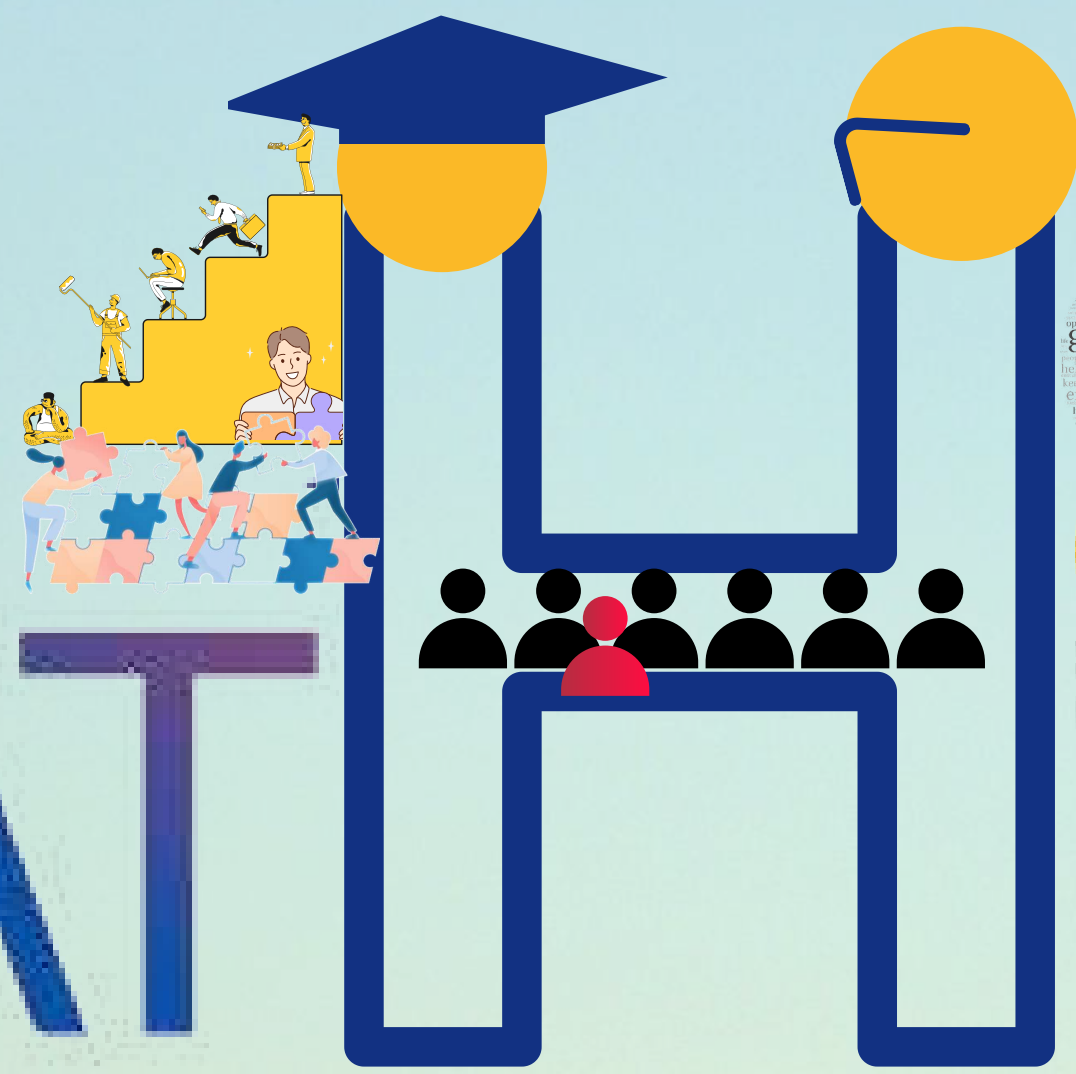
Employability

Entrepreneurship



PATWAY

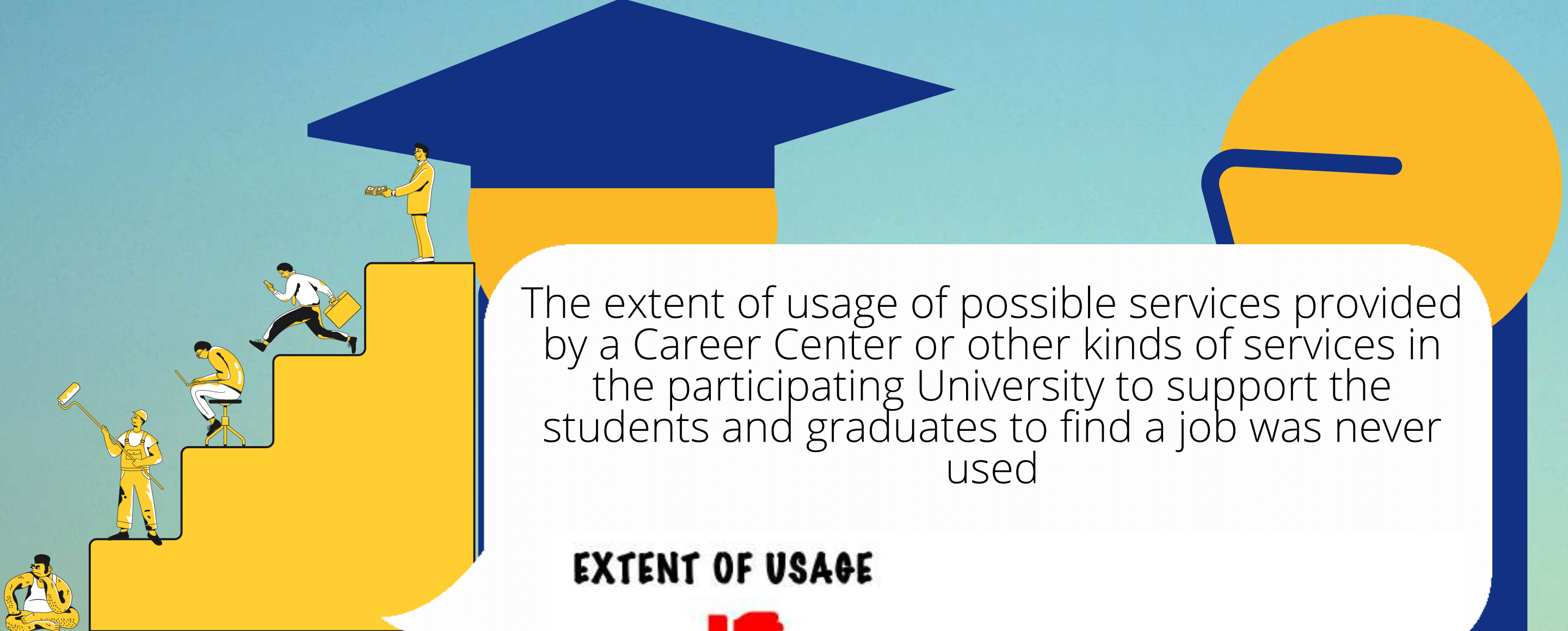
PATHWAY





without strong support for increased employability and entrepreneurship, a nation of young people without employment can be a drag on the economy and a threat to society.





The extent of usage of possible services provided by a Career Center or other kinds of services in the participating University to support the students and graduates to find a job was never used

EXTENT OF USAGE



Incubator and Co-working



Entrepreneurship program



Entrepreneurship Curricular Content



Business competitions



Network of partners



Mentoring program





Finance resources



Training program



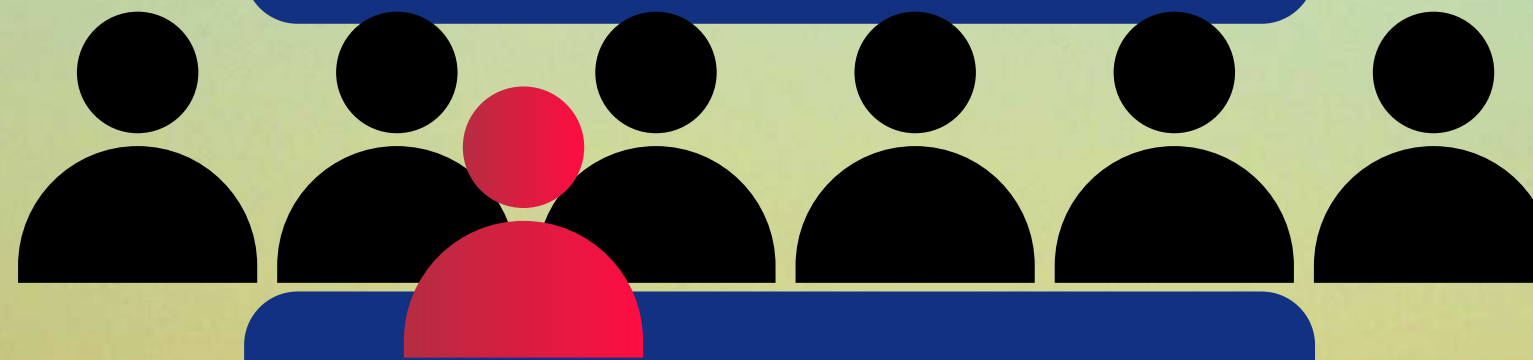
Provision of soft skills training



The provision of soft skills training (e.g., leadership skills, communication skills, teamwork) was very useful and contributed to increasing job opportunities as well as enhancing skills to start a business



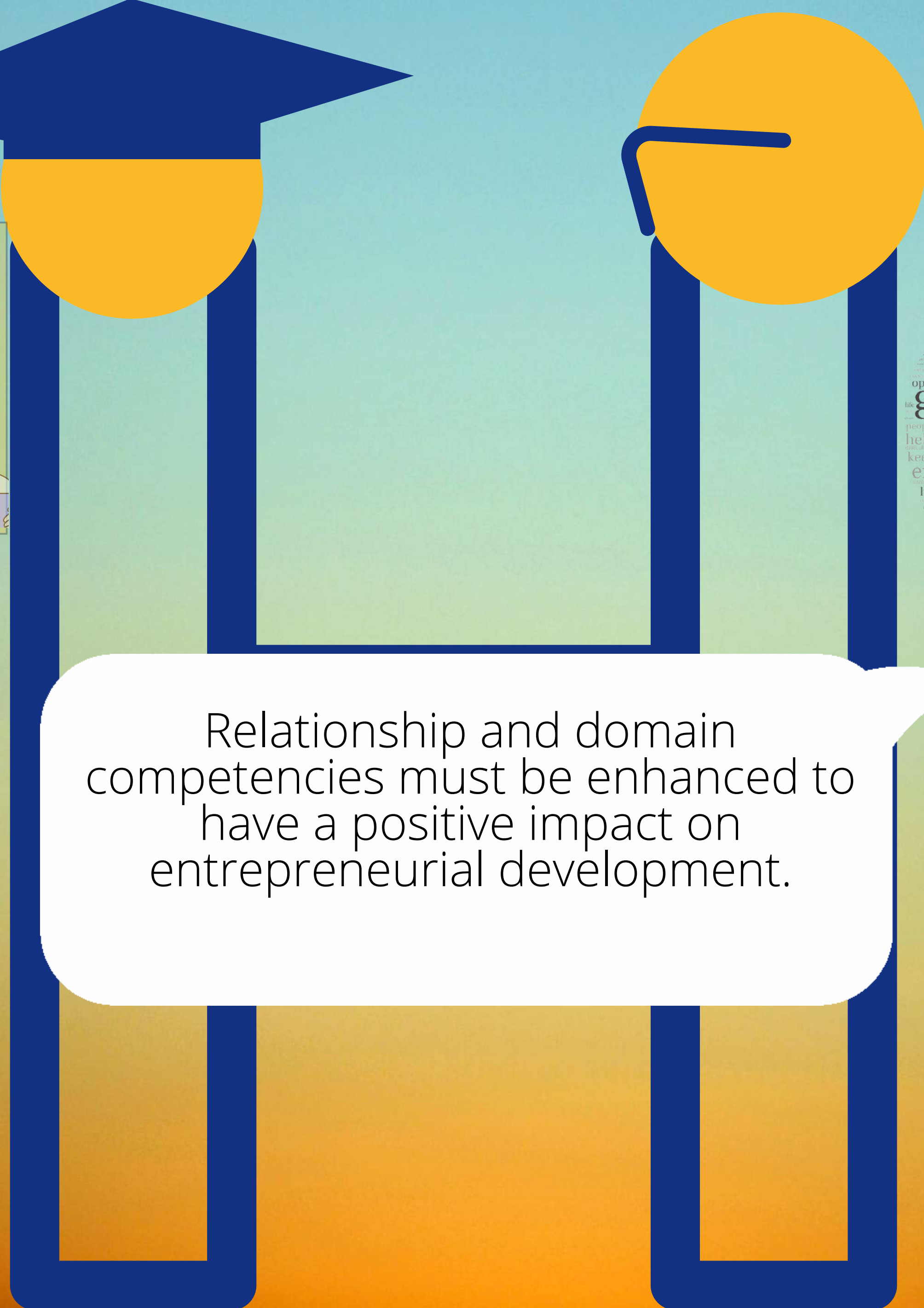
development
management
curriculum
search
letter
career
employers
resume
soft skills
work
job
interview
planning
email
internet





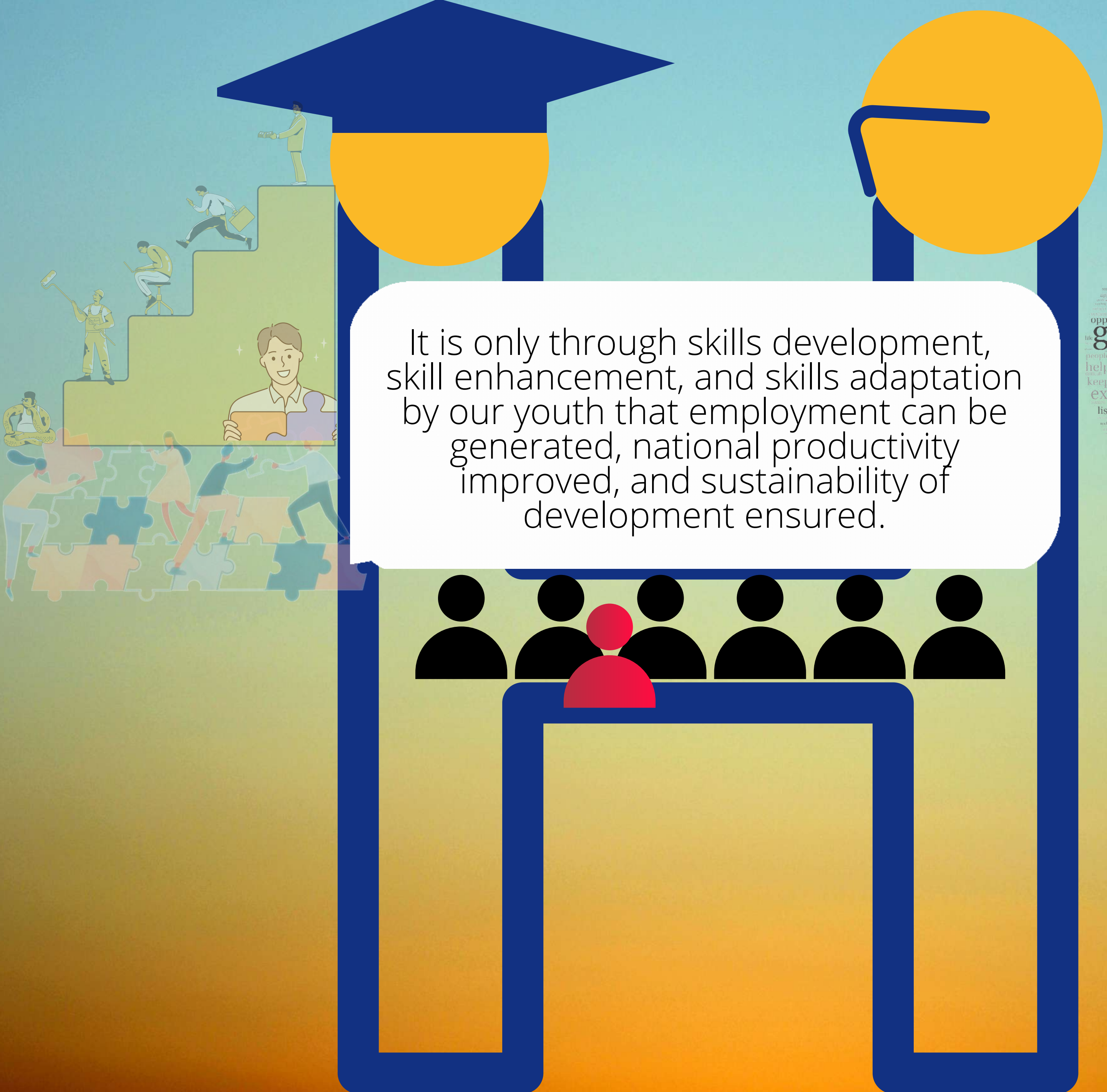
Given the limited job opportunities, University staff and students saw the need to upgrade the skills of professors to effectively develop an entrepreneurial culture and deliver entrepreneurial skills training to students.





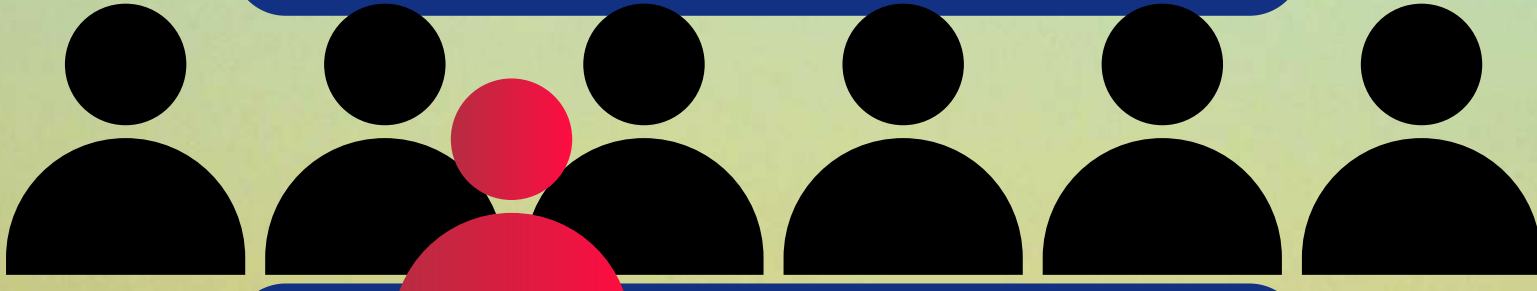
Relationship and domain competencies must be enhanced to have a positive impact on entrepreneurial development.

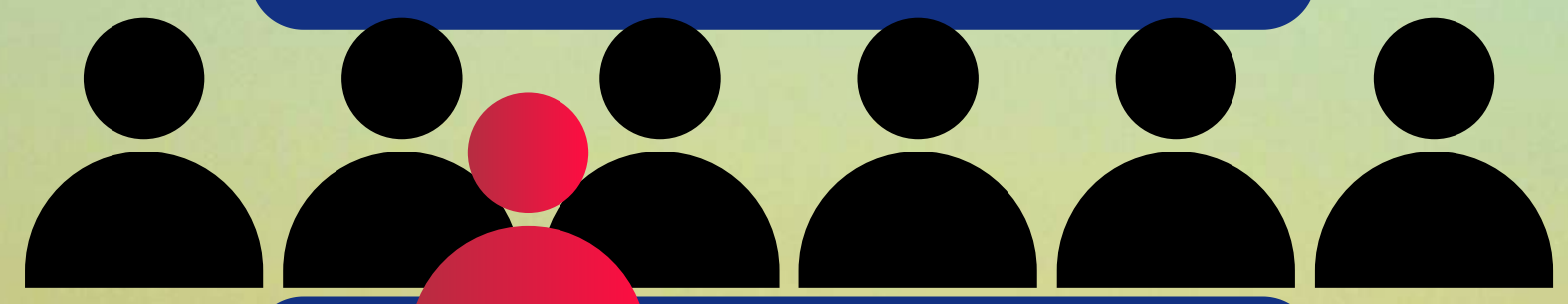
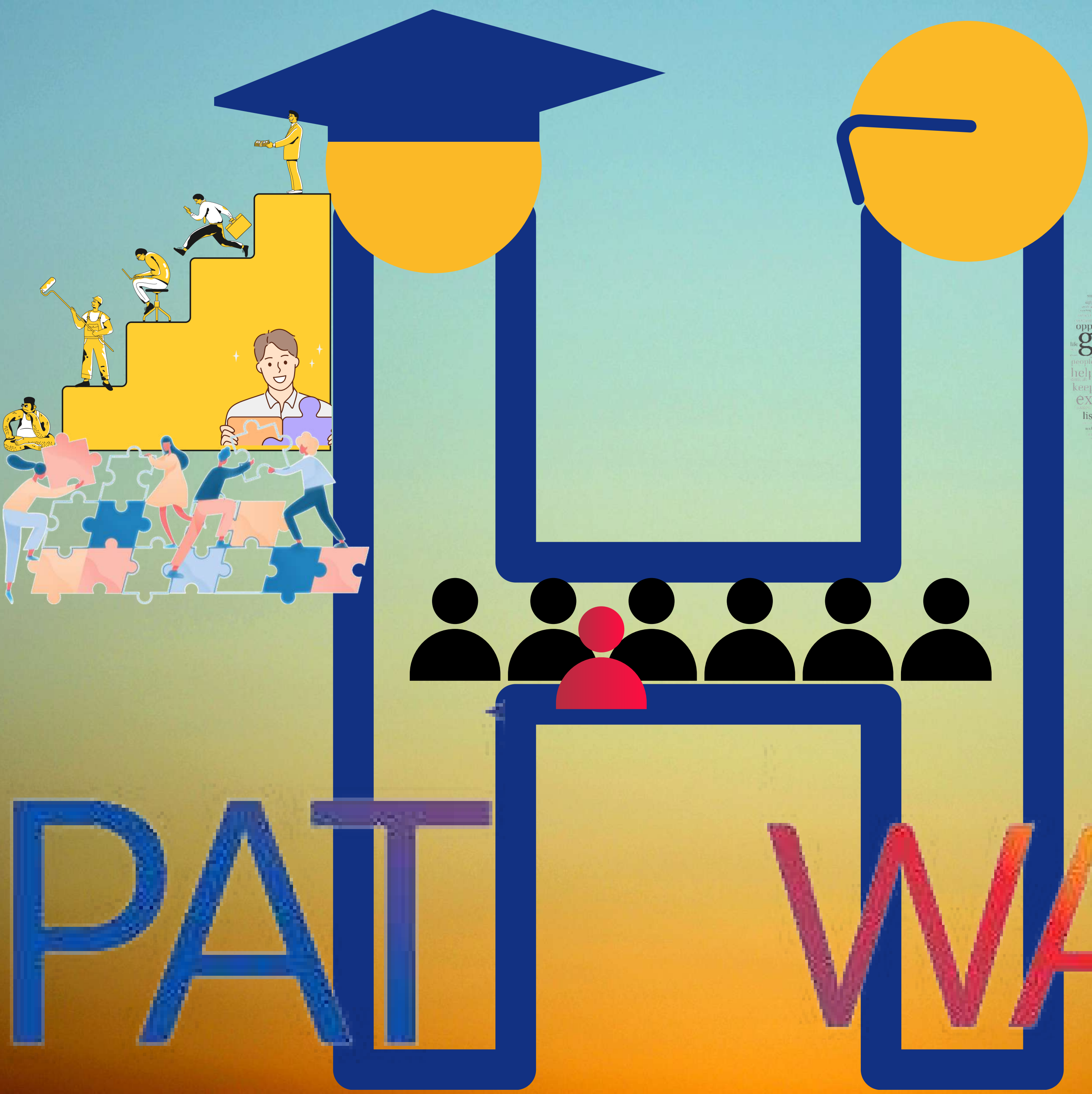




It is only through skills development, skill enhancement, and skills adaptation by our youth that employment can be generated, national productivity improved, and sustainability of development ensured.

development management curriculum guide education seek position know search letter vitae career employers goals cover step resume objectives soft skills job interview professional offer planning email internet





development
management
curriculum
search
letter
career
employers
goals
cover
step
resume
soft
skills
work
job
interview
professional
planning
email
internet



PATWAY

PATHWAY



The extent of usage of possible services provided by a Career Center or other kinds of services in the participating University to support the students and graduates to find a job was never used



Some office staff and students place essential importance on graduates' ability to learn and adapt as a factor in the success of obtaining a job in the country. Lack of job vacancies was the common factor that can be a barrier to graduates securing employment.



It is only through skills development, skill enhancement, and skills adaptation by our youth that employment can be generated, national productivity improved, and sustainability of development ensured.

The provision of soft skills training (e.g., leadership skills, communication skills, teamwork) was very useful and contributed to increasing job opportunities as well as enhancing skills to start a business

they want to train professors in how to develop students' entrepreneurial skills, to support the development of an entrepreneurial culture. Given the limited job opportunities, University staff and students saw the need to upgrade the skills of professors to effectively develop an entrepreneurial culture and deliver entrepreneurial skills training to students.

Relationship and domain competencies must be enhanced to have a positive impact on entrepreneurial development.

Personal, social-economic, psychological, technological, and political/legal factors must be considered when developing one's entrepreneurial skills

